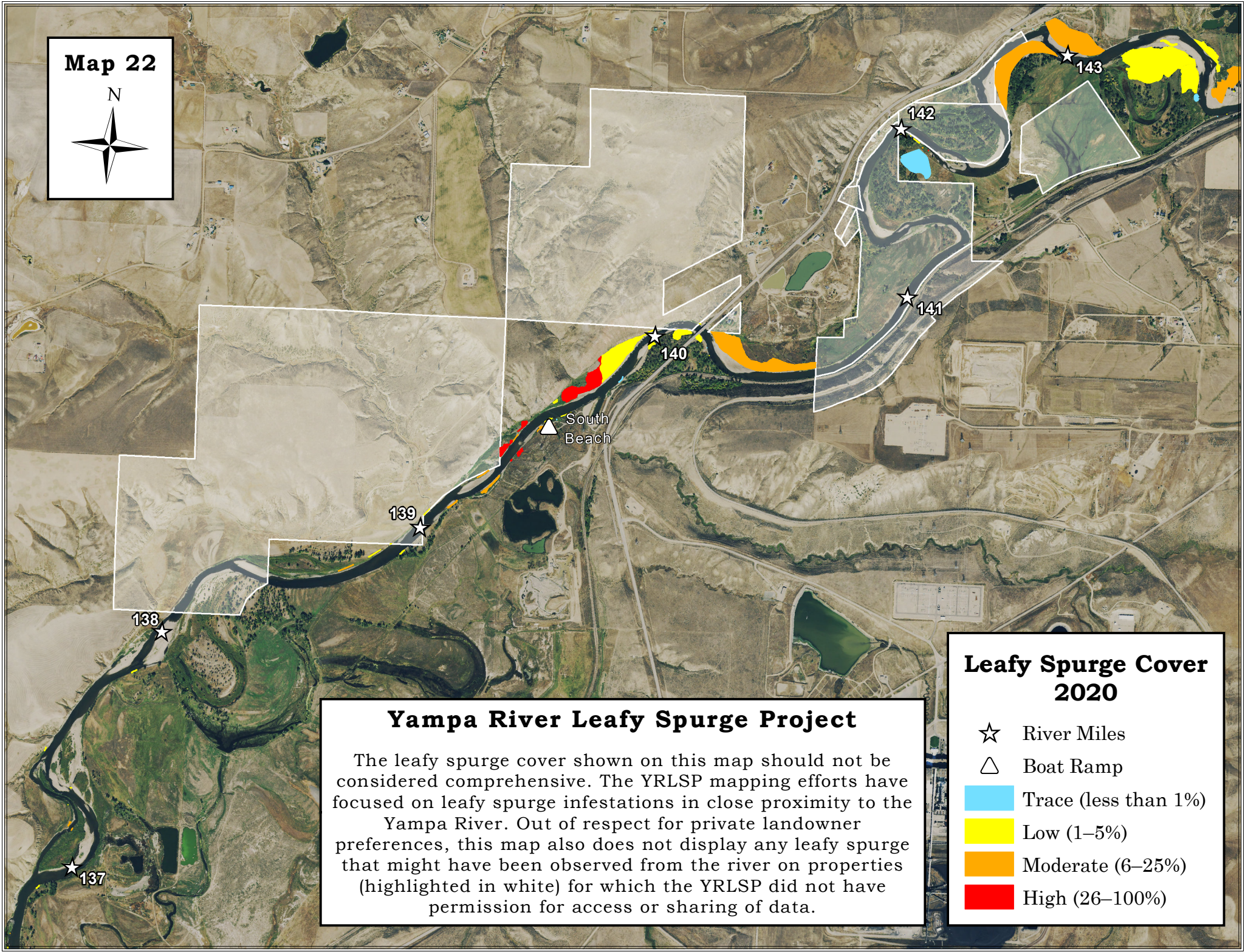


Map 22



Yampa River Leafy Spurge Project

The leafy spurge cover shown on this map should not be considered comprehensive. The YRLSP mapping efforts have focused on leafy spurge infestations in close proximity to the Yampa River. Out of respect for private landowner preferences, this map also does not display any leafy spurge that might have been observed from the river on properties (highlighted in white) for which the YRLSP did not have permission for access or sharing of data.

Leafy Spurge Cover 2020

- ☆ River Miles
- △ Boat Ramp
- Light Blue Trace (less than 1%)
- Yellow Low (1–5%)
- Orange Moderate (6–25%)
- Red High (26–100%)