

Yampa River Leafy Spurge Project

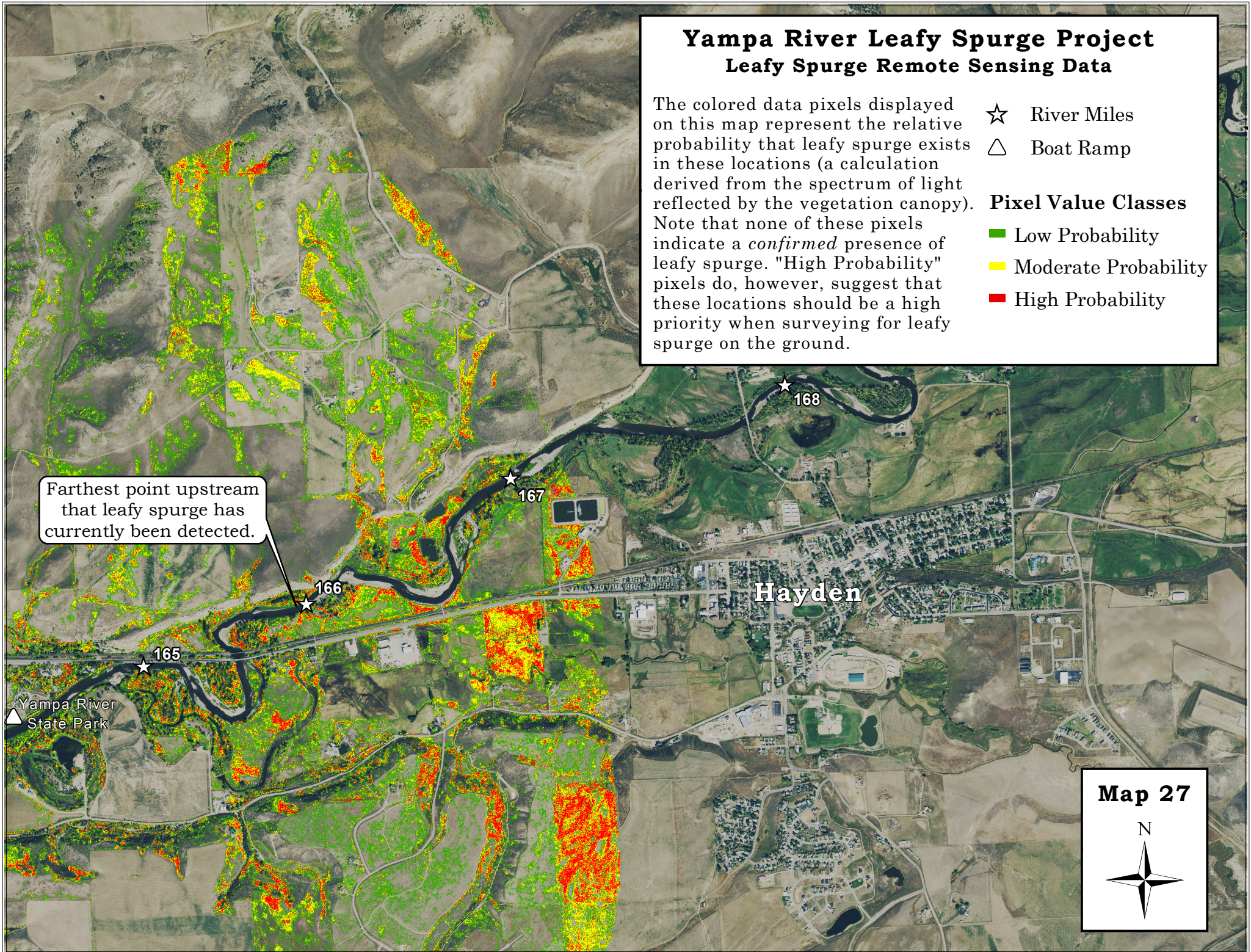
Leafy Spurge Remote Sensing Data

The colored data pixels displayed on this map represent the relative probability that leafy spurge exists in these locations (a calculation derived from the spectrum of light reflected by the vegetation canopy). Note that none of these pixels indicate a *confirmed* presence of leafy spurge. "High Probability" pixels do, however, suggest that these locations should be a high priority when surveying for leafy spurge on the ground.

- ☆ River Miles
- △ Boat Ramp

Pixel Value Classes

- Low Probability
- Moderate Probability
- High Probability



Farthest point upstream that leafy spurge has currently been detected.

Yampa River State Park

Hayden

Map 27

N